



# An undescribed variety of *Berberis petiolaris* Wall. ex G. Don (Berberidaceae) from the Himalaya

R.R.Rao, Tariq Husain and Bhaskar Datt

Taxonomy and Herbarium Division, National Botanical Research Institute, Lucknow - 226001, India

(Received May 9, 1994; Accepted August 26, 1994)

**Abstract.** *Berberis petiolaris* Wall. ex G. Don var. *extensa* Ahrendt ex Rao, Husain & B. Datt, var. nov., an undescribed variety from the Himalaya, is described and illustrated.

**Keywords:** *Berberidaceae*; *Berberis petiolaris* var. *extensa*; Himalaya; Taxonomy.

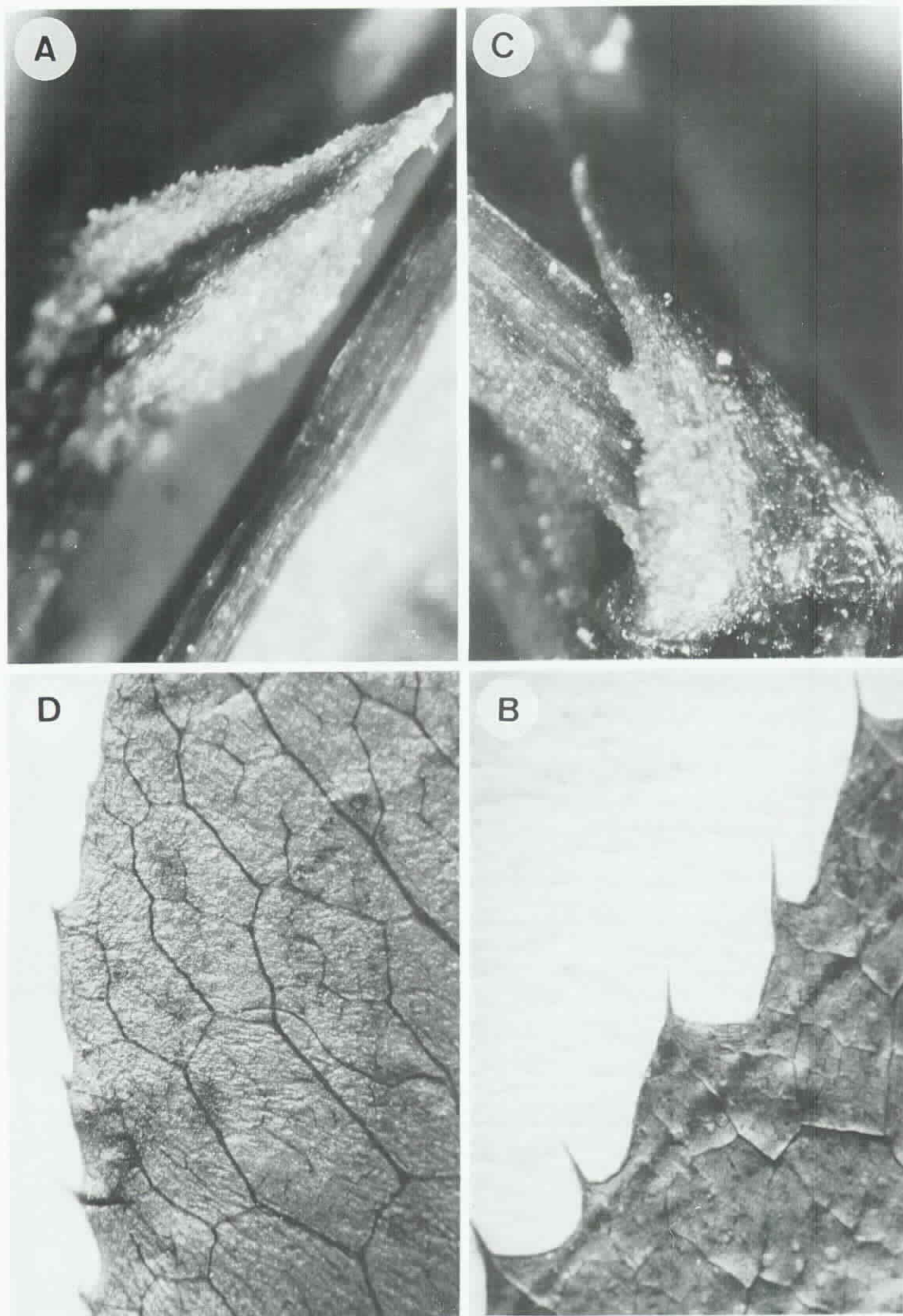
While examining the type material of *Berberis* from the British Museum (BM) we came across a specimen (*Pollunin, Sykes & Williams 2066*) collected from Nepal Himalaya. It carried a determinavit label by L.W.A. Ahrendt dated 28th April, 1953, and bearing the name *Berberis petiolaris* var. *extensa*. This name, however, was never formally published by Ahrendt in his revision of *Berberis* and *Mahonia* (Ahrendt, 1961). Subsequently, Chamberlain, who published a synopsis of *Berberis* section *Wallichianae* (Chamberlain and Hu, 1985), annotated this sheet as *B. petiolaris* var. *garhwalana* in the year 1983. While examining the holotype of *B. petiolaris* var. *garhwalana* (*Strachy & Winterbottom 5*) from BM, it was clear that the collection *Pollunin, Sykes & Williams 2066* is not actually var. *garhwalana*, as annotated by Chamberlain, but a new variety of *B. petiolaris* as annotated by Ahrendt. In addition to the type material, several collections made by the authors from the Garhwal Himalaya were critically examined. It was found that the two varieties are quite distinct and need to be kept separate. Variety *extensa* can be distinguished from the other two varieties as in Table 1.



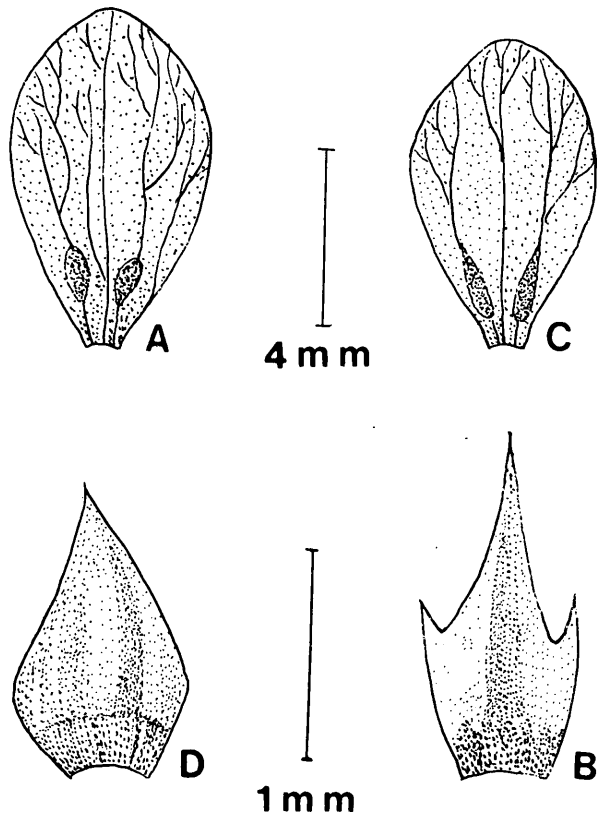
**Figure 1.** Holotype of *B. petiolaris* var. *extensa* (*Pollunin, Sykes & Williams 2066*, BM)

**Table 1.** Differences between varieties of *Berberis petiolaris*.

Characters	var. <i>petiolaris</i>	var. <i>garhwalana</i>	var. <i>extensa</i>
Leaves	entire	spinous-serrate	spinous-serrate
Inflorescence	racemose, 8-15-flowered	subumbellate, 3-7-flowered	racemose, 12-14-flowered
Bracts	entire	entire	uni-or sometimes bi-serrate on both sides
Pedicels	not swollen	swollen at the flower base	not swollen
Glands on petals	ovate, ca. 1.25 mm long	lanceolate, ca. 2 mm long	ovate, ca. 1.25 mm long



**Figure 2.** A, B. *Berberis petiolaris* var. *garhwalana* (Strachey & Winterbottom 5). A, bract; B, leaf margin. C, D. *Berberis petiolaris* var. *extensa* (Polunin, Sykes & Williams 2066), C, bract; D, leaf margin.



**Figure 3.** A, B. *Berberis petiolaris* var. *extensa* (Polunin, Sykes & Williams 2066). A, inner surface of petal; B, bract. C, D. *Berberis petiolaris* var. *garhwalana* (Strachey & Winterbottom 5). C, inner surface of petal; D, bract.

As var. *extensa* has not been validly published, it is validated here.

***Berberis petiolaris*** Wall. ex G. Don var. ***extensa*** Ahrendt ex Rao, Husain et B. Datt, var. nov. —TYPE: Nepal. Sialgarhi, Bhauhabisa, Kholā, elev. 3000 m, 19 May 1952, Polunin, Sykes & Williams 2066 (holotype: BM). Figures 1, 2 C–D, 3 A–B.

*Berberis petiolaris* Wall. ex G. Don affinis, sed differt foliis plerumque cum 6–21 spinulis marginalibus uniformibus, sulcatis, pedicellis bracteisque cum 1 vel 2 serrationibus.

Large evergreen shrubs; stems glabrous, terete, sublustrous, mature stems deep red, red-brown or purplish-brown; internodes 3–5 cm long; spines often absent, occasionally solitary, 3–13 mm long. Leaves 1.5–6 cm long, 0.7–3 cm wide, obovate, ovate or obovate-oblong, mucronate, base attenuate, membranous, spinous-serrate, nerves raised on both sides, light green on both surfaces; petioles 0.5–2 cm long. Inflorescence 12–14-flowered, racemose, occasionally with 1 or 2 flowers from the base of the inflorescence; bracts 1.5–3 mm long, uni- or sometimes bi-serrate on both sides. Flowers yellow; pedicels 0.7–1.7 cm long, glabrous, sulcate, uniform throughout; outer sepals 4–5 mm long, 2–2.5 mm wide, ovate; inner sepals 6.5–7 mm long, 4.5–5 mm wide, ovate, acute; petals 7–7.5 mm long, 4–4.5 mm wide, obovate, entire, base clawed, conspicuously veined; glands ca. 1.25 mm long, broad, ovate. Anthers 2 mm long, winged, with two prominent sacs at the top, 2.25 mm long; filaments 3.5 mm long. Fruits not seen.

*Additional specimen examined.* INDIA. Tehri Garhwal, Tali, A. K. Goel 66624 (LWG).

**Acknowledgements.** The authors thank the Director, National Botanical Research Institute, Lucknow, for facilities and the authorities of the British Museum, Natural History (BM) for loan of specimens. We are also thankful to Dr. D.F. Chamberlain of the Royal Botanic Garden, Edinburgh for going through the manuscript.

## Literature Cited

- Ahrendt, L.W.A. 1961. *Berberis* and *Mahonia*—A taxonomic revision. *J. Linn. Soc. (Bot.)* **57**: 1–410.
- Chamberlain, D.F and C.M. Hu. 1985. A synopsis of *Berberis* section *Wallichiana*. *Notes Roy. Bot. Gard. Edinb.* **42**: 529–557.

喜馬拉雅地區小檗科 *Berberis petiolaris* Wall. ex G. Don  
的一新變種

R.R. Rao, Tariq Husain and Bhaskar Datt

Taxonomy and Herbarium Division,  
National Botanical Research Institute,  
Lucknow-226001, India

本文中對產自喜馬拉雅地區的一新變種 *Berberis petiolaris* Wall. ex G. Don var. *extensa* Ahrendt ex Rao, Husain et B. Datt 加以描述及圖說。

關鍵詞： *Berberis petiolaris* var. *extensa*；新變種；喜馬拉雅。